

STATE OF MINNESOTA, } ss.
COUNTY OF MURRAY, }

I hereby certify that the within instrument was filed in this office for record on the 30TH day of AUGUST A.D. 20 19 at 9:00 o'clock A. M., and was duly recorded as Document No. _____

Evelyn C. Larson
County Recorder

Index No. N-25

CERTIFICATE OF LOCATION OF GOVERNMENT CORNER

NORTHEAST Corner of Section 24, Township 107 N, Range 39 W

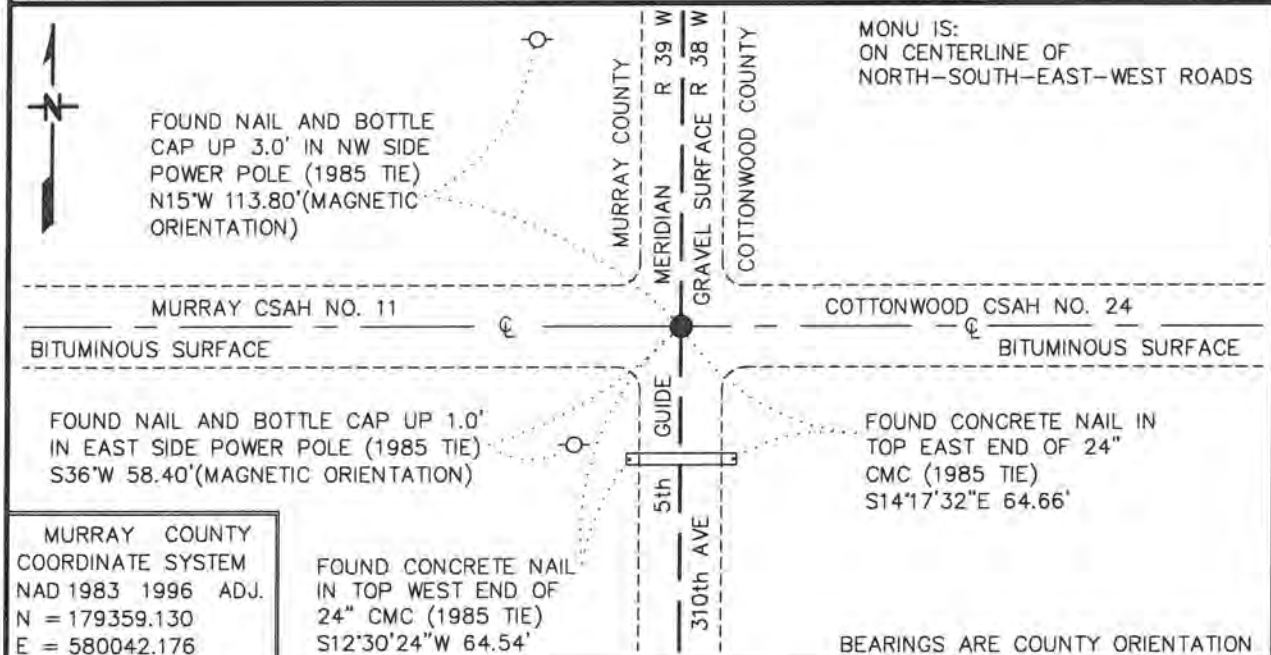
5TH Principal Meridian, State of Minnesota, County of MURRAY

At the corner location shown on the sketch:

On 11/7/2017 found a 3/4" DIAMETER IRON PIPE, FLUSH WITH THE ROAD SURFACE
DATE

left monument as found, lowered monument, removed monument (explain)

On _____ Placed a _____
DATE



Statement of evidence for this corner location is on back of this page.

APRIL 2018
WMA00745

I hereby certify that this plan, specification, or report was prepared by me or under my direct supervision and that I am a duly Licensed Land Surveyor under the laws of the State of Minnesota.

SIGNATURE

Bruce W. Sheppard
BRUCE W. SHEPPARD

DATE

8/15/19

License Number

17003

Northeast Corner of Section 24, Township 107 North, Range 39 West

1985 November, Lowell R. Pommerening Jr., PLS 17005, with the Minnesota Department of Natural Resources filed a Certificate of Location of Government Corner for this corner in the Murray County Recorder's Office.

A Certificate of Location of Government Corner for this corner was recorded on November 14, 1985 in the Cottonwood County Recorder's Office as Document No. 188917, File 172 Card 2179, Microfilmed.

FOR ADDITIONAL INFORMATION SEE THE ABOVE CERTIFICATES OF LOCATION OF GOVERNMENT CORNER

The DNR Division of Lands and Minerals contacted the following for survey information:

Website - mngeo.state.mn.us for GLO plat and field notes

Website - murray-countymn.com for section and quarter section corner information

Murray County Recorder's Office

Cottonwood County Recorder's Office

Zieske Land Surveying, Inc. of Windom

The DNR Division of Lands and Minerals contacted the following for survey information:

Website - mngeo.state.mn.us for GLO plat and field notes

Website - murray-countymn.com for section and quarter section corner information

Murray County Recorder's Office

Cottonwood County Recorder's Office

Zieske Land Surveying, Inc. of Windom

2012 June 12, ties to Government Corners, obtained from murray-countymn.com, show that a steel pipe was found down, 3 inches at the corner. The following is noted about the corner:

on center line of road

ties are good

The steel pipe is shown to have the following coordinates:

N = 179359.152

E = 580042.450

Elev = 1427.016

2017 November 7, the DNR Division of Lands and Minerals visited the area of the corner and found a ¾ inch diameter iron pipe, flush with the road surface. The iron pipe was found to be:

2634.84 feet from the east quarter corner of Section 24

2787.37 feet from the north quarter corner of Section 19

2669.79 feet from the north quarter corner of Section 24

Analysis of the above information led the DNR Division of Lands and Minerals to conclude that the found ¾ inch diameter iron pipe, marks the location of the corner. Searched for and found four record ties as shown on the sketch of reference ties.